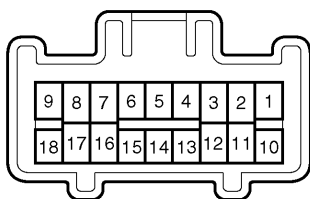


Wiper and Washer Switch Side



N

I18569

INSPECTION**1. INSPECT FRONT WIPER AND WASHER SWITCH CONTINUITY**

Switch position	Tester connection	Specified condition
OFF	7 - 16	Continuity
INT	7 - 16	Continuity
LO	7 - 17	Continuity
HI	8 - 17	Continuity
Washer OFF	-	No continuity
Washer ON	2 - 11	Continuity

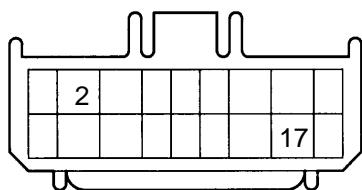
If continuity is not as specified, replace the switch.

2. INSPECT REAR WIPER AND WASHER SWITCH CONTINUITY

Switch position	Tester connection	Specified condition
OFF	-	Continuity
INT	2 - 13	Continuity
ON	2 - 10	Continuity
Washer OFF	-	No continuity
Washer ON	2 - 12	Continuity

If continuity is not as specified, replace the switch.

Wire Harness Side



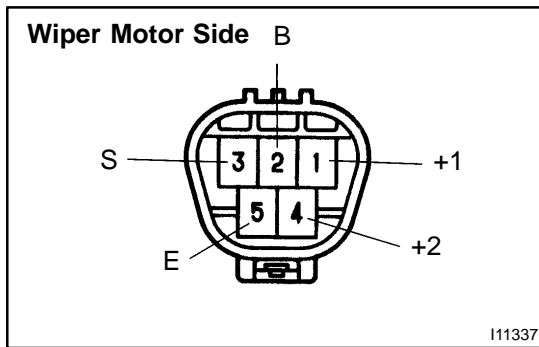
I04034

**3. Connector disconnected:
INSPECT WIPER AND WASHER SWITCH CIRCUIT**

Disconnect the connector from the motor and inspect the connector on the wire harness side, as shown.

Tester connection	Condition	Specified condition
2 - Ground	Always	Continuity
17 - Ground	Ignition switch LOCK or ACC	No voltage
17 - Ground	Ignition switch ON	Battery Positive Voltage

If circuit is not as specified, inspect the circuits connected to other parts.

**4. Low speed:****INSPECT FRONT WIPER MOTOR OPERATION**

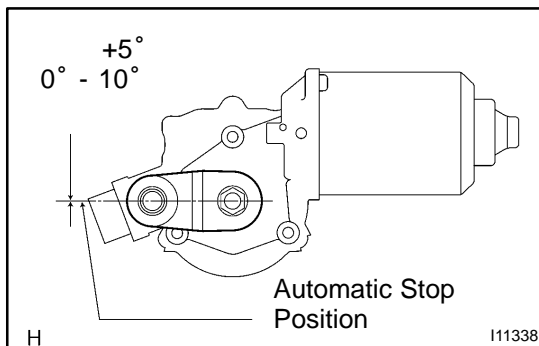
Connect the positive (+) lead from the battery to terminal 1 and the negative (-) lead to terminal 5, check that the motor operates at low speed.

If operation is not as specified, replace the motor.

5. High speed:**INSPECT FRONT WIPER MOTOR OPERATION**

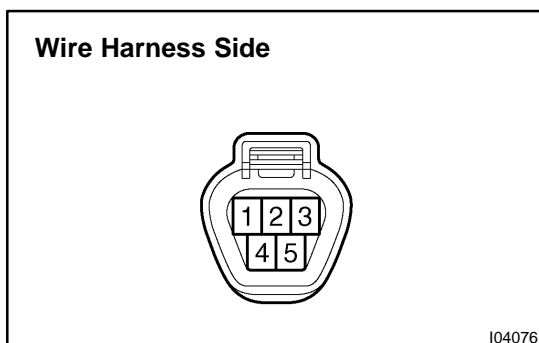
Connect the positive (+) lead from the battery to terminal 4 and the negative (-) lead to terminal 5, check that the motor operates at high speed.

If operation is not as specified, replace the motor.

**6. Stopping at stop position:****INSPECT FRONT WIPER MOTOR OPERATION**

- (a) Operate the motor at low speed and stop the motor operation anywhere except at the stop position by disconnecting positive (+) lead from terminal 1.
- (b) Connect terminals 1 and 3.
- (c) Connect the positive (+) lead from the battery to terminal 2 and negative (-) lead to terminal 5, check that the motor stops running at the stop position after the motor operates again.

If operation is not as specified, replace the motor.

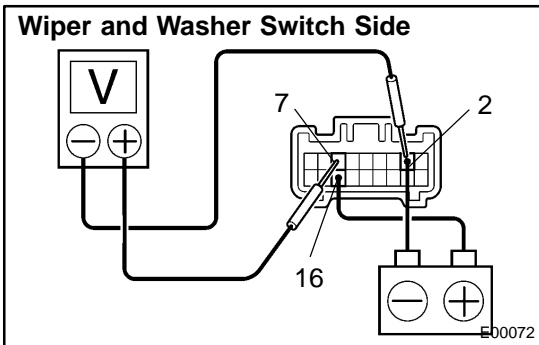
**7. Connector disconnected:****INSPECT FRONT WIPER MOTOR CIRCUIT**

Disconnect the connector from the motor and inspect the connector on the wire harness side, as shown.

BODY ELECTRICAL - WIPER AND WASHER SYSTEM

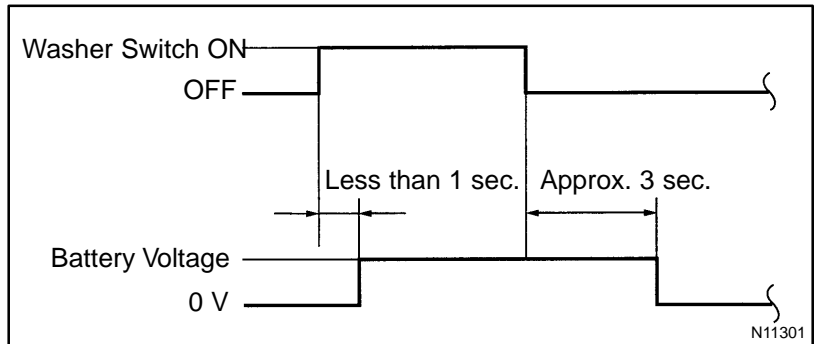
Tester connection	Condition	Specified condition
4 - Ground	Always	Continuity
2 - Ground	Ignition switch LOCK or ACC	No voltage
2 - Ground	Ignition switch ON	Battery Positive Voltage

If circuit is not as specified, inspect the circuits connected to other parts.

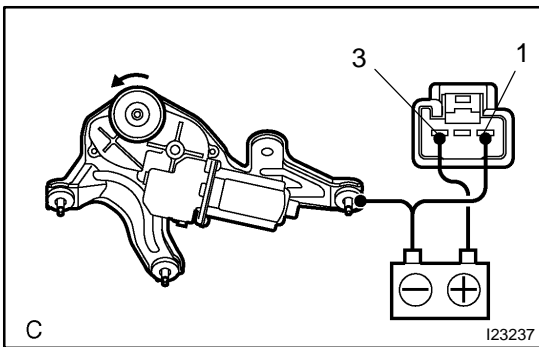


8. INSPECT FRONT WASHER LINKED OPERATION

- (a) Connect the positive (+) lead from the battery to terminal 16 and the negative (-) lead to terminal 2.
- (b) Connect the positive (+) lead from the voltmeter to terminal 7 and the negative (-) lead to terminal 2.
- (c) Push in the washer switch, and check that the voltage changes as shown in the table.

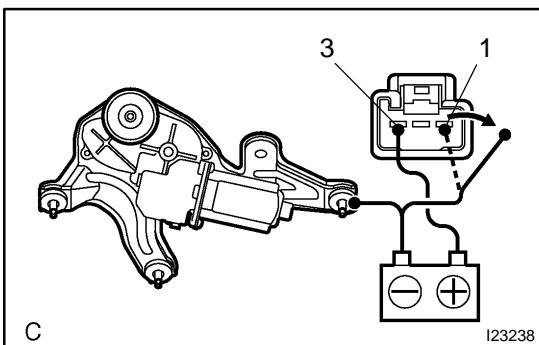


If operation is not as specified, replace the wiper and washer switch.

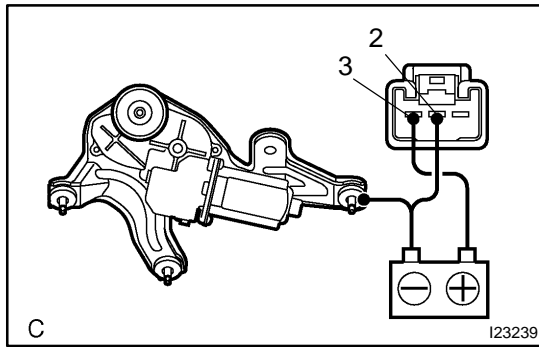


9. INSPECT REAR WIPER MOTOR OPERATION

- (a) Connect the positive (+) lead from the battery to terminal 3 and negative (-) lead to terminal 1 and the motor body, check that the motor operates.



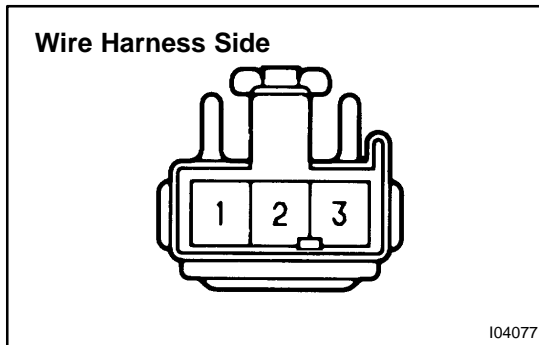
- (b) Disconnect the negative (-) lead from terminal 1, check that the motor stops running at the stop position. If operation is not as specified, replace the motor.



10. Intermittent:

INSPECT REAR WIPER MOTOR OPERATION

Connect the positive (+) lead from the battery to terminal 3 and the negative (-) lead to terminal 2 and the motor body, check that the motor operates intermittently for 9-15 seconds. If operation is not as specified, replace the motor.



11. Connector disconnected:

INSPECT REAR WIPER MOTOR CIRCUIT

Disconnect the connector from the motor and inspect the connector on the wire harness side, as shown.

Tester connection	Condition	Specified condition
1 - Ground	Always	Continuity
2 - Ground	Always	Continuity
3 - Ground	Ignition switch OFF or ACC	No voltage
3 - Ground	Ignition switch ON	Battery positive voltage

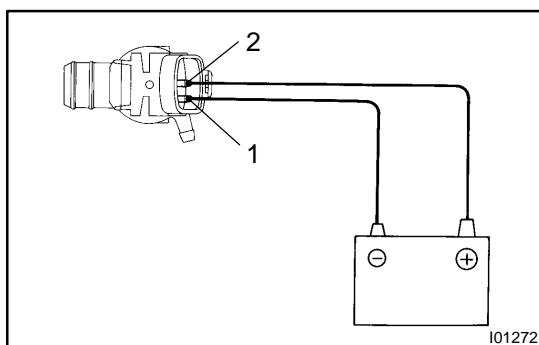
If circuit is not as specified, inspect the circuits connected to other parts.

12. Wagon:

INSPECT REAR WASHER LINKED OPERATION

Make sure that the rear wiper operates simultaneously with the washer when the rear washer switch is turned ON.

- If the rear wiper does not operate, inspect the rear wiper motor.
- If washer fluid does not come out, inspect the washer motor.
- If necessary, replace the wiper and washer switch.



13. Sedan:

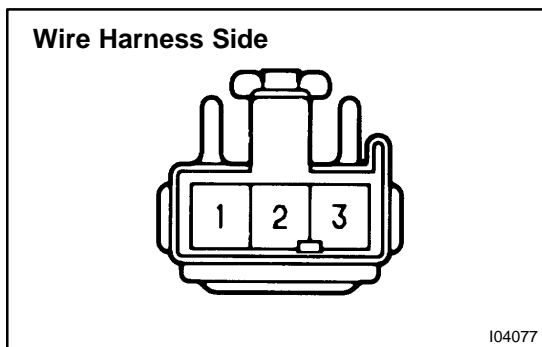
INSPECT WASHER MOTOR OPERATION

Connect the positive (+) lead from the battery to terminal 2 and the negative (-) lead to terminal 1, check that the motor operates.

NOTICE:

These tests must be performed quickly (within 20 seconds) to prevent the coil from burning out.

If operation is not as specified, replace the motor.

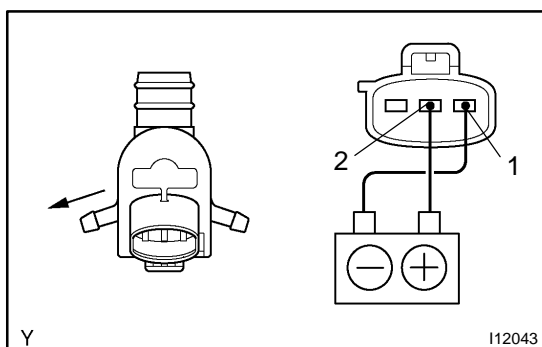


**14. Sedan, Connector disconnected:
INSPECT FRONT WASHER MOTOR CIRCUIT**

Disconnect the connector from the motor and inspect the connector on the wire harness side, as shown.

Tester connection	Condition	Specified condition
2 - Ground	Ignition switch ON	Battery Positive Voltage

If circuit is not as specified, inspect the power source, wire harness and wiper switch.



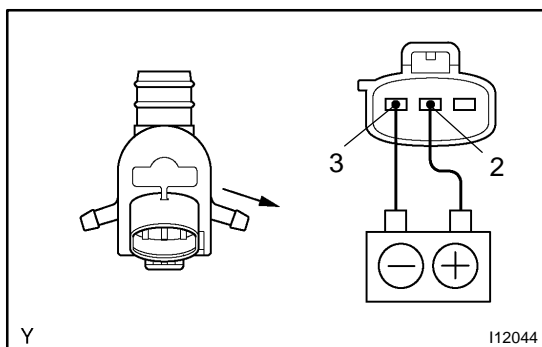
**15. Wagon:
INSPECT FRONT WASHER MOTOR OPERATION**

Connect the positive (+) lead from the battery to terminal 2 and the negative (-) lead to terminal 1, check that the motor operates.

NOTICE:

These tests must be performed quickly (within 20 seconds) to prevent the coil from burning out.

If operation is not as specified, replace the motor.



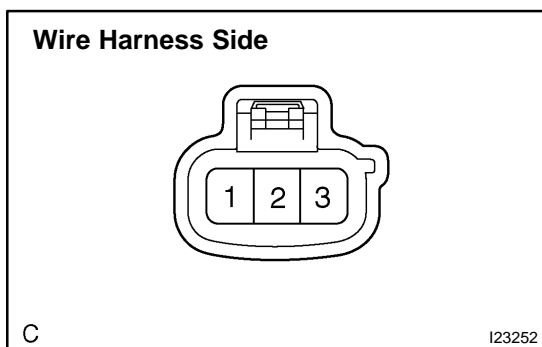
16. INSPECT REAR WASHER MOTOR OPERATION

Connect the positive (+) lead from the battery to terminal 2 and the negative (-) lead to terminal 3, check that the motor operates.

NOTICE:

These tests must be performed quickly (within 20 seconds) to prevent the coil from burning out.

If operation is not as specified, replace the motor.



**17. Wagon, Connector disconnected:
INSPECT WASHER MOTOR CIRCUIT**

Disconnect the connector from the motor and inspect the connector on the wire harness side, as shown.

BE-80**BODY ELECTRICAL - WIPER AND WASHER SYSTEM**

Tester connection	Condition	Specified condition
2 - Ground	Ignition switch ON	Battery positive voltage

If circuit is not as specified, inspect the power source, wire harness and wiper switch.